

2014

# BioTechnology

*An Indian Journal*

FULL PAPER

BTAIJ, 10(19), 2014 [10936-10941]

## Establishment of PDPC in the sudden accidents emergency mechanism of the colleges and universities

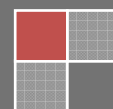
Shuqin Zheng<sup>1</sup>, Yanru Wang<sup>2</sup><sup>1</sup>School of Construction Management and Real Estate, Chongqing University, Chongqing 400045, (CHINA)<sup>2</sup>Wenzhou University, Wenzhou, Zhejiang, 325035, (CHINA)

### ABSTRACT

PDPC has a positive role in enhancing the capacity of emergency management of sudden accidents in the colleges and universities. From the perspective of emergency management construction, this paper conducts effective analysis on factors generated by sudden accidents in the colleges and universities, integrates information resources according to the specific situation existing in the sudden accidents correspondingly and constructs on the basis of constitute factors in their emergency plans. It makes the means and methods of emergency have strong comprehensiveness, be able to build an emergency mechanism with diversified construction idea and thus to meet the practical needs of emergency management of sudden accidents in the colleges and universities. During the research and discussion process, this study mainly conducts corresponding research on dynamic processing and analysis process of sudden accidents in the colleges and universities, makes effective construction on decision-making model, thus to make the establishment process of the emergency mechanism more scientific. Besides, in order to get the effective verification on emergency mechanism establishment in the practice process, effective discussion on management methods of emergency mechanism in the practice process also be conducted. Finally, this paper does effective construction on normal management mechanism of sudden accidents in the colleges and universities, public opinions handling mechanism, group decision-making mechanism and other relevant aspects to achieve the ultimate goal of improvement and science in the research process. It is not only the main idea of this research, but also fully embodies the main idea and ultimate goal of the research.

### KEYWORDS

PDPC; Sudden accidents in the colleges and universities; Emergency mechanism; Scientific establishment.



INTRODUCTION

From the traditional sense, emergency methods of sudden accidents in the colleges and universities often does static judgment against the developments, which has made it difficult to effectively control the sudden accidents. While PDPC advocates dynamic analysis on sudden accidents in the colleges and universities, which to make effective extraction of uncertain factors and then an emergency mechanism can be effectively established. Combined with the basic requirements and implementation path of normal management of sudden accidents processing, this research conducts corresponding research and exploration to make the establishment process of emergency mechanism more clear and to provide a solid strong support for effective early-warning of the sudden accidents.

THE BASIC REQUIREMENTS OF NORMAL MANAGEMENT OF SUDDEN ACCIDENTS PROCESSING

Analyze problems dynamically

During the formation process of sudden accidents in the colleges and universities, the corresponding changes of development factors generated by sudden accidents process make it uncertain and dynamic analysis during the sudden accidents analysis process should be regarded as the fundamental starting point. The static analysis mainly determines the fundamental nature of the accidents. It is a specific analysis process under stable state, thus it is not the development process for sudden accidents but for foreseeable conditions<sup>[1]</sup>. By dynamic analysis on the decision-making plans for sudden accidents in colleges and universities, it can make the decisions have a strong adaptability and provide a powerful guarantee constantly to the clarity and accuracy of processing methods and measures (details are shown in Figure 1).

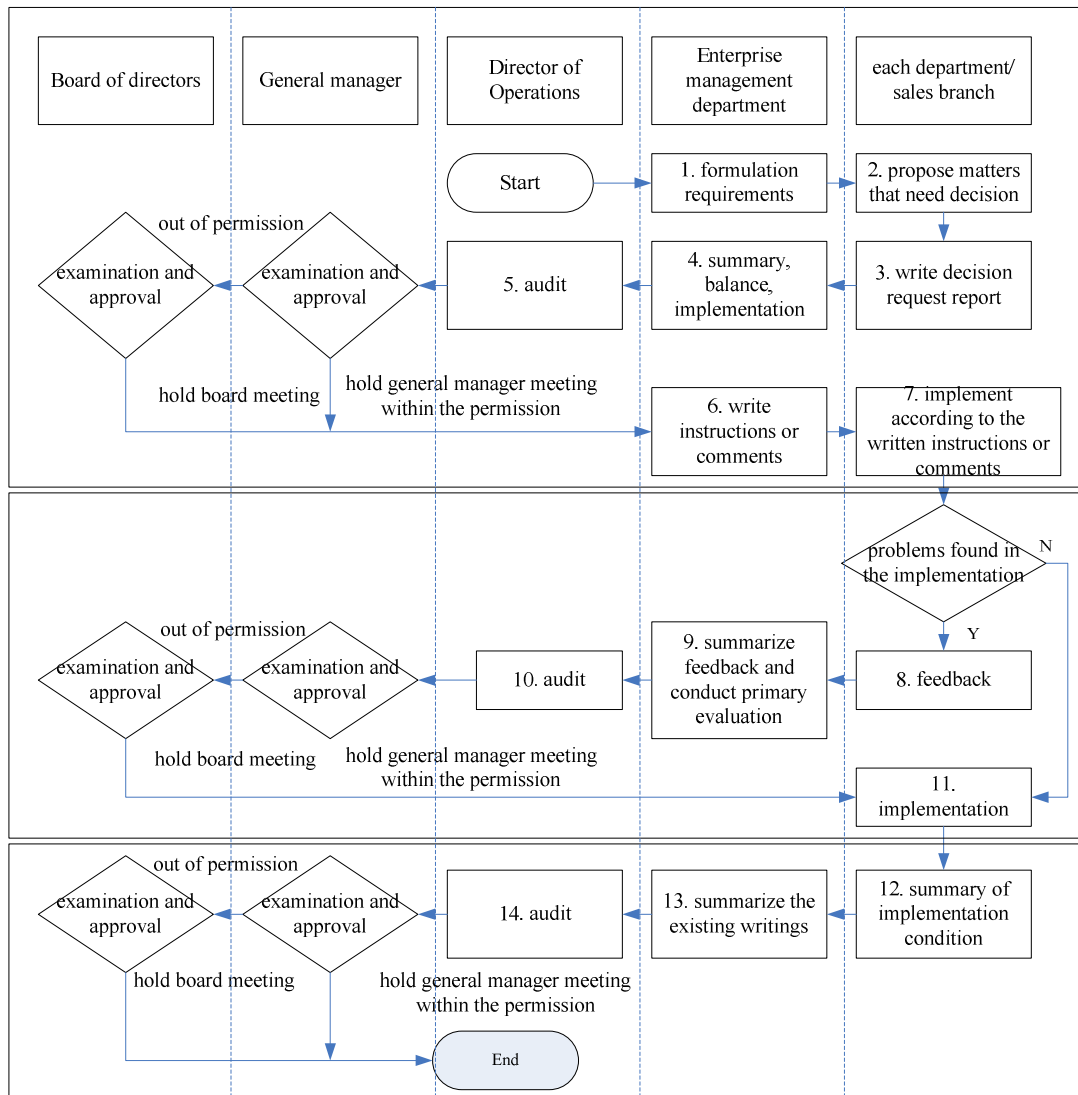


Figure 1 : Flow chart of dynamic management on sudden accidents in the colleges and universities during decision-making period

### Distribute resources reasonably

The essence of sudden accidents process faced and disposed by colleges and universities is collection of decision-making and decision implementation process by using various resources under a series of target constraints. With relatively low emergency capacity, weak emergency system and limited effective resources, colleges and universities are required to manage and deploy in accordance with the emergency needs when using and allocating resources. They also should guarantee the effective usage of emergency resources at maximum degree to achieve the standard of processing reasonably from the perspective of opportunity cost analysis.

### Implementation process management

During the emergency mechanism emergency mechanism of sudden accidents in the colleges and universities, this paper mainly conducts effective analysis on the reasons of sudden accidents. It can fully embody the corresponding early-warning mechanism, make effective clearness on processing methods of sudden accidents and do effective evaluation on the impact and loss caused by sudden accidents, which can provide a positive, effective and clear basis for further processing plans. As shown in the Figure 2, this is a specific establishment process of emergency mechanism of sudden accidents in the colleges and universities, which is also the main idea to effectively solve the sudden accidents.

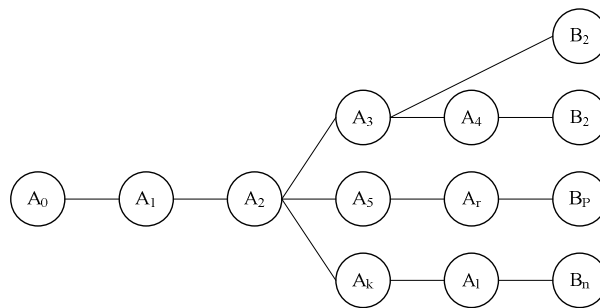


Figure 2 : The final state is nonideal state

## IMPLEMENTATION PATH OF NORMAL MANAGEMENT OF SUDDEN ACCIDENTS PROCESSING IN THE COLLEGES AND UNIVERSITIES

### Establish network handling mechanism of public opinion

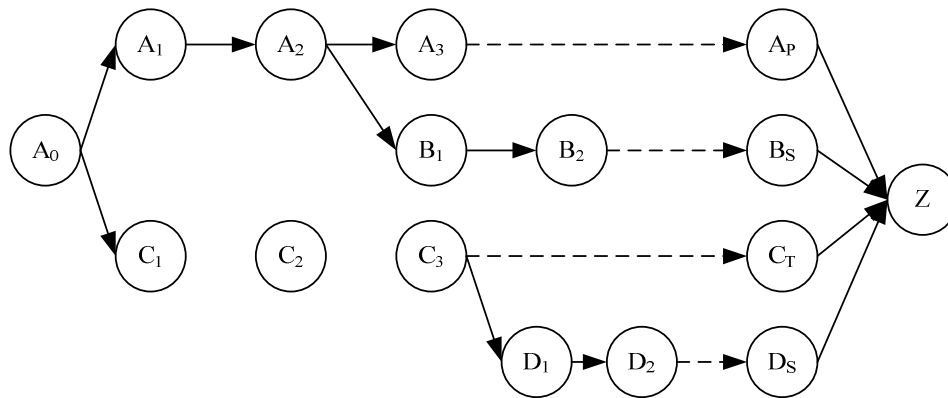
The modern social life is complicated, but the online media has become the most important source of social information on account for its strong information network. After the sudden accidents, the attention paid to online media by public and their opinions reached unprecedented height, thus the public would be more concerned about the media coverage and evaluation of the sudden accidents. The positive media guidance can release the public opinions, minimize the negative impact of sudden accidents and help the public to form real understanding and evaluation on sudden accidents. From this perspective, the consensus has the nature of controllability and guidance<sup>[2]</sup>.

During the processing procedure of sudden accidents in the colleges and universities, it can have positive effect if disclosed the resolution of sudden problems for the first time and the existing problems can be effectively solved in the shortest possible time due to the resolution. It makes public opinion can conduct effective evaluation from an objective point of view to make emergency plans and means open and transparent, then the public opinion collapses of itself from the fundamental starting point of public opinion guidance. From another point of view, in terms of public opinion, it can generate corresponding guidance for public to transform their awareness levels of sudden accidents in colleges and universities, and thus to has a more positive impact on effectively solving the sudden accidents. Information dissemination has become the primary means to expand public opinion. Whereas in the process of solving sudden accidents in colleges and universities, regarding information dissemination as the basic means can have corresponding positive impact on making solutions, provide effective assistance for handling angles and the clarification of handling ideas and to maximize the value of information dissemination. Network handling mechanism of public opinion conducts effective information dissemination according to sudden accidents in colleges and universities, excavates reasons and various factors of the sudden accidents effectively, makes the decision maker can recognize the severity and instantaneity of the sudden accidents in the shortest possible time, provides a solid public opinion information basis for effective handling plan, maximizes the value existing in the network handling mechanism of public opinion and provides powerful help for solving sudden accidents in colleges and universities effectively.

### Establish diversified group decision-making mechanism

During the processing procedure of sudden accidents in the colleges and universities, there are many constraints such as time, resource and information. However, due to the strong uncertainty of sudden accidents in colleges and universities, the constraints and decision-making environment are "different" from general decision-making, which also

highlights its importance out<sup>[3]</sup>. Nevertheless, under such circumstances, for effective establishment of decision-making mechanism, it should be established all-around as well as effectively strengthens the collectivity and intelligence. Diversified establishment of the main body of decision-making can strengthen the guarantee for the decision quality and maintain optimal handling effect. The so-called diversified group decision-making establishment mainly maximizes the available information for each decision-making group, does effective measurement on decision information selection, decreases deficiencies existing in the decision and forms an effective handling decision for sudden accidents. Details are shown in Figure 3.



**Figure 3 : The final state is ideal state**

#### **Establish normal psychological intervention mechanism**

During the effective resolution process for sudden accidents in colleges and universities, the necessity of establishing corresponding psychological intervention mechanism should be paid sufficient attention. As a result, the resolving objective can be further cleared and the emergency mechanism could become more comprehensive. However, in today's emergency mechanism in colleges and universities, there are still some vacancies in establishing the psychological intervention mechanism could be seen from relevant literature search. Often in this case, the emergency handling after sudden accidents in colleges and universities can embody the strong educational function, while relatively weak in the recovery process. In this way, the mental state of educators and students would be hit to some extent from beginning to end, but the psychological recovery cannot achieve the purpose of rapidness, which has a negative impact on effectively carrying out education work in colleges and universities. However, effective psychological intervention has relaxation effect on this situation. It conducts effective research from the level of psychological impact of sudden accidents to make emergency plans equip with relatively strong psychological soothing effect and provide strong support for effectively recovering the inevitable consequence of sudden accidents<sup>[4]</sup>. It is where the value of psychological intervention mechanism lies. However, from this point of view, it enables the decision method of sudden accidents in colleges and universities more targeted. In addition, it also effectively embodies the all-around and three-dimensional establishment of emergency mechanism. Put psychological soothing as an important part and put psychological factors in emergency situations as the fundamental starting point to promote their range can be effectively measured around psychological conditions, thus to achieve the establishment of effective psychological intervention mechanism.

#### **Establish modeled decision management mechanism**

During the processing procedure of sudden accidents in the colleges and universities, the employed decisions are usually unconventional and have no procedural laws. It conducts effective evaluation on decision-making concept and objective to form positive foundation for solutions and preparatory solutions. Decision-making model should be effectively established in this period to establish emergency mechanism for sudden accidents in colleges and universities. On this point, however, the effective concept definition of the problem should be further divided by two aspects. The first aspect effectively identifies sudden accidents, fully defines the limited problems, does effective analysis on uncertain factors and provides strong support for the formation of emergency plans. During this period, it should regard the development of actual problems as the fundamental starting point, conduct effective research on the depth and breadth existing in the problems and effectively evaluate the development directions and scope of the problems to make the establishment of emergency mechanism more comprehensive. The second aspect is to make effective statement of problems existing in the sudden accidents in colleges and universities for the corresponding analog. Besides, it is able to do effective analysis on its adaptability and technicality to derive the corresponding solutions. This is the subject thought in solving and controlling sudden accidents in colleges and universities, it also fully embodies the importance of the modeled decision-making mechanism<sup>[5]</sup>. According to the development of sudden accidents in colleges and universities, effective evaluation on selected plans can develop diversified

solutions, thus to provide solid model foundation for effective establishment of emergency plans and ensure the decision management mechanism can be effectively formed. Details are shown in Figure 4.

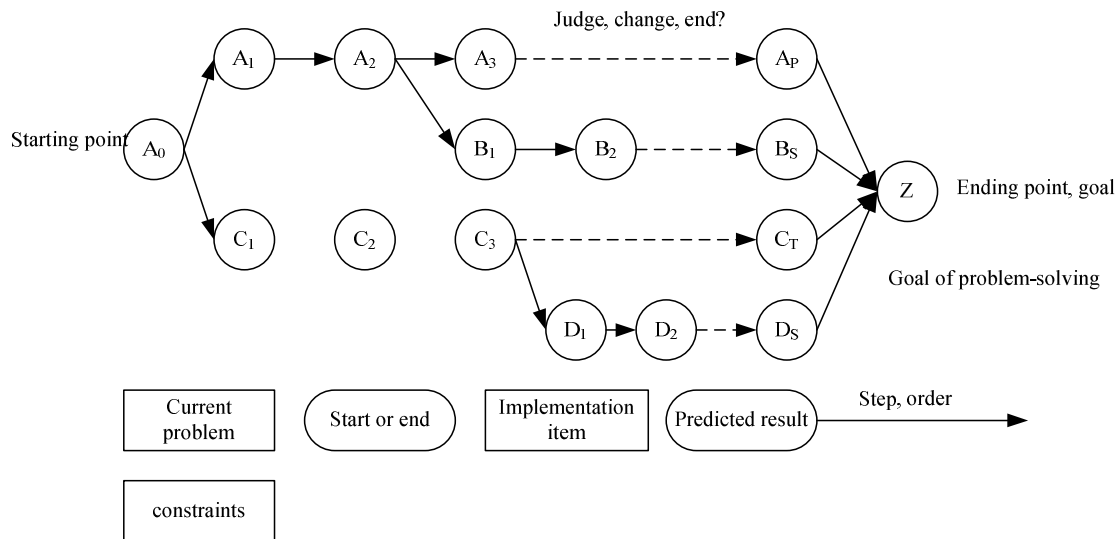
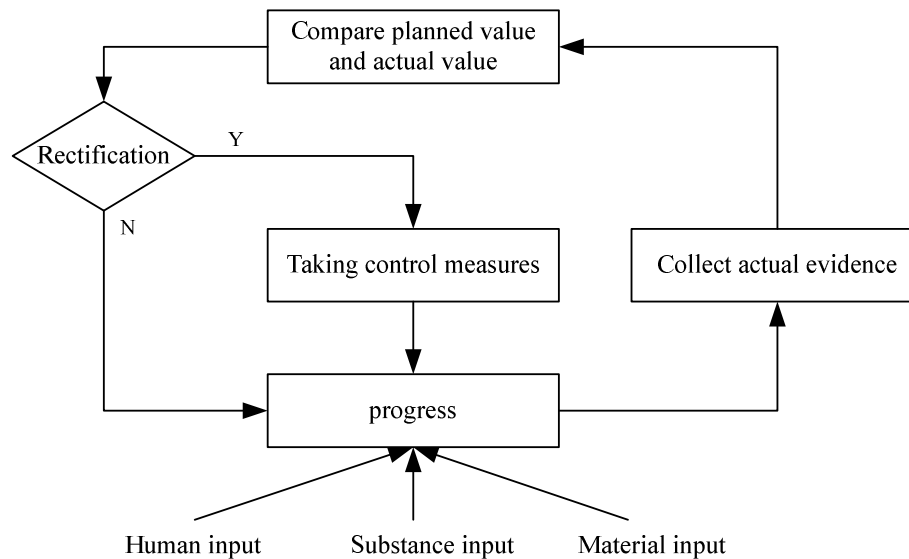


Figure 4 : Concept schematic diagram of PDPC

#### Establish scientific evaluation and feedback mechanism

During the processing procedure of sudden accidents in the colleges and universities, due to the uncertainties of accident itself, rigid constraints of processing time, resources and other factors make it difficult for colleges and universities to handle out the sudden accidents. Often in such complex situations, decision makers in colleges and universities need clear decision-making thoughts than ever in order to play a positive and effective role in making decision plans. The formation and various factors of emergency plans only can be fully embodied in the coordination process under such circumstance, which highlights the adaptability and pertinence of emergency mechanism establishment. For emergency mechanism establishment, scientific information evaluation and feedback mechanism should be established for promoting effective collection of relevant information when handling sudden accidents in colleges and universities, evaluating the accident development on the basis of collected information feedbacks and providing correct handling directions for sudden accidents. The emergency evaluation and feedback mechanism establishment for sudden accidents in colleges and universities can be mainly divided into two parts. The first part is to give appropriate evaluation for the sudden accident itself and to make timely information feedback of its impact. In this way, the handling level of emergency situations can be transformed gradually from a macro point of view to a micro point of view. Thus, the development directions and transformation results can obtain the correct cognitive process, which plays a strong role in promoting the evaluation and establishment of effective emergency methods<sup>[6]</sup>.

The second part is to carry out effective information evaluation on effective control and calm process of sudden accidents in colleges and universities, thereby effective collection of their evaluation results can be conducted and corresponding feedback effect can be formed. However, this period does not mean that sudden accidents in colleges and universities are completely resolved, but means that the sudden accidents have reached another development period. Events often have the beginning, developing, controlling, calming down and solving process. As for the evaluation and feedback during calming down process, the event is not gone, but forms the corresponding event recovery. As for the establishment process of emergency mechanism, the evaluation and feedback during calming down process is the last part of the emergency mechanism establishment. It makes effective evaluation on the results generated by sudden accidents during calming down process to obtain full guarantee during recovery period. In addition, it conducts effective exploration on losses of sudden accidents and specific contents that need to recover, thus to provide empirical basis for effectively avoidance in the later period. It also can strengthen the clearness of measures took in the recovery period to minimize the adverse effects and provide positive promotions. It can be seen from this perspective that, the effective establishment of evaluation and feedback mechanism for sudden accidents in colleges and universities can clearly embodies the emergency effect and indispensable factors<sup>[7]</sup>. From the perspective of the emergency mechanism, the evaluation and feedback mechanism mainly makes specific analysis on its information and strong evaluation on the impact of sudden accidents, which can result in a more positive impact on the comprehensive handling process for sudden accidents in colleges and universities. This discussion process can fully reflect where the elements and important factors of evaluation and feedback mechanism lie in (details are shown in Figure 5).



**Figure 5 : Schematic diagram of dynamic control for sudden accidents in colleges and universities**

## CONCLUSION

Above-mentioned contents are relevant researches and explorations of the PDPC establishment in emergency mechanism of sudden accidents in colleges and universities conducted by this paper. Regarding the implementation path of normal management of solving sudden accidents in colleges and universities as the research priority makes PDPC can have positive impact on effectively establishing emergency plans for sudden accidents in colleges and universities, makes effective discussion on the necessary requirements for establishing the emergency mechanism and hopes to provide a solid theory and practice foundation for further research.

## ACKNOWLEDGEMENT

Project: general scientific research project by the Education Department of Zhejiang Province: research on social responsibility of construction enterprises based on sustainable development theory, (Project Number: 201430955)

## REFERENCES

- [1] Yixue Xia; Research on emergencyplan based on essence analysis and functional orientation, *The Science and Technology of Fire-fighting*, 33(7), 822-824 (2014).
- [2] Xianglin Yuan; Emergency plan for main seawater pipe breakdown in the engine room, *Seamanship*, (3), 63-64 (2014).
- [3] Bing SU; Start time and strategy of daily losses change in emergency plan for sudden accidents, *Statistics and Decision*, (6), 37-39 (2014).
- [4] Zhixin Liu; Efficacy orientation research on government emergency plan, *Science of Disaster*, 29(2), 154-157 (2014).
- [5] Congshan Li, Tianqi Liu, Xingyuan Li; Fast matching and intelligent generation method for power-cut emergencyplan, *Electric Power Automation Equipment*, 34(1), 32-36 (2014).
- [6] Shuxian Li, Yong Xu; Current situation of emergencyplan for public health events in China's primary and secondary schools, *Chinese Journal of School Health*, 34(10), 1185-1187 (2013).
- [7] Yu Pang; Problems and solutions of emergency management in Chin, *Science and Technology Management Research*, 33(11), 201-203 (2013).